

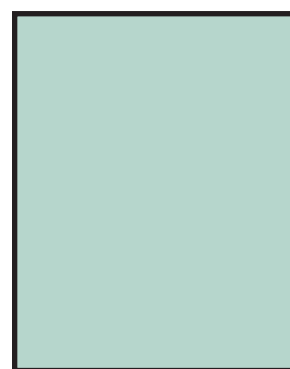
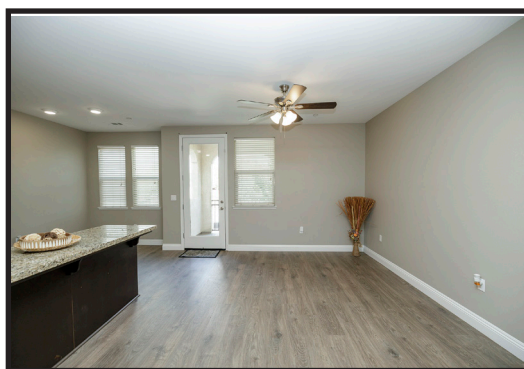
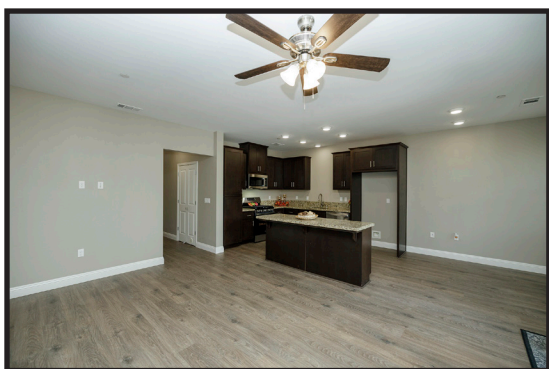
140 Ivy Avenue E39, Patterson CA 95363




**BERKSHIRE
HATHAWAY**
HomeServices
Drysdale Properties

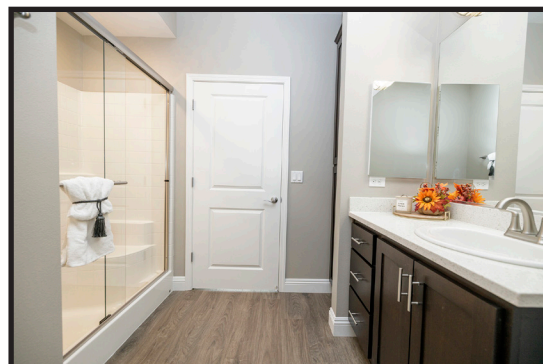


2 Bedrooms 2 Bathrooms 1147 Square Feet



Gorgeous Ivy Terrace condo featuring 2 bedrooms and 2 full bathrooms. Step inside to an attractive entry that leads to a light and airy living room and a quaint dining area, perfect for entertaining. The chef's dream gourmet kitchen boasts granite counters, new stainless steel appliances, and an island with a breakfast bar. A convenient hallway laundry closet and an impressive guest bathroom add comfort and functionality. The lush primary ensuite offers a peaceful retreat with access to a shady balcony patio. Additional highlights include fresh two-tone paint, stunning new 12MM laminate flooring, new custom baseboards, and raised panel interior doors throughout.

Virtual Tour



Penelope J. Miller, Realtor® GRI, CRS, Broker Associate Berkshire Hathaway Drysdale Properties
209.996.8334 penelope.miller@bhhsdrysdale.com DRE#01145034

Information is deemed reliable but not guaranteed. Copyright 2025 Priority Graphics