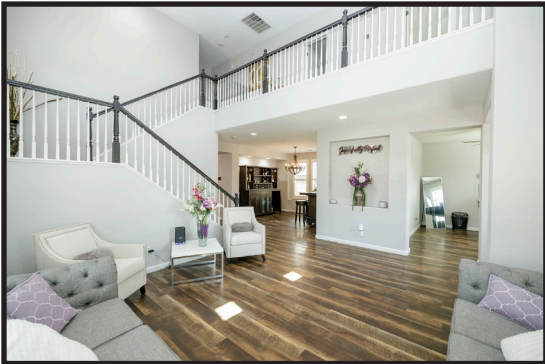


1766 Churchill Downs Circle, Oakdale CA 95361



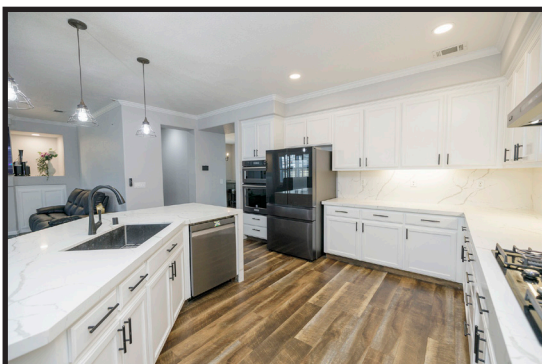
3-4 Bedrooms 3 Bathrooms 3120 Square Feet on .1738 Acre



\$749,000

Discover an extraordinary residence tucked within the prestigious Bridle Ridge enclave, offering thoughtfully designed living space! This grand 2 story home is a rare blend of serene sophistication and functional spaciousness! Step inside to find an open, sun-lit layout anchored by a striking kitchen outfitted with quartz counters, a sweeping center island, and an adjacent butler's pantry ideal for culinary ventures or effortless entertaining! A bright, well-appointed sunroom extends the living space, offering a tranquil overlook of the low maintenance, inviting yard, a perfect blend of indoor solace and outdoor charm! Upstairs, a spacious master suite awaits, complete with a luxurious bath that pampers and rejuvenates, completing your own personal retreat. Car lovers and hobbyists will adore the 4-car tandem garage, with RV access, offering unmatched utility for vehicles, gear, and creative project space! Positioned just steps from parks, schools, and shopping, this home encapsulates the tranquil yet connected lifestyle that defines Bridle Ridge! This beauty boasts owned solar, EV charging, along with recently replaced: dual CHVAC, LVP flooring throughout, all windows, cabinets, quartz counters, soft water system, interior/exterior paint, and so much more!

Virtual Tour



Michelle Griffith, Realtor® PMZ Real Estate 209.484.1539
griffith@pmz.com DRE#01400474

Information is deemed reliable but not guaranteed. Copyright 2025 Priority Graphics